



MONTHLY MEMBERSHIP PROGRESS REPORT

District 11 E2

Results as of: 5/31/2014

GMT: GARY ANDERSON

LOCATION MICHIGAN

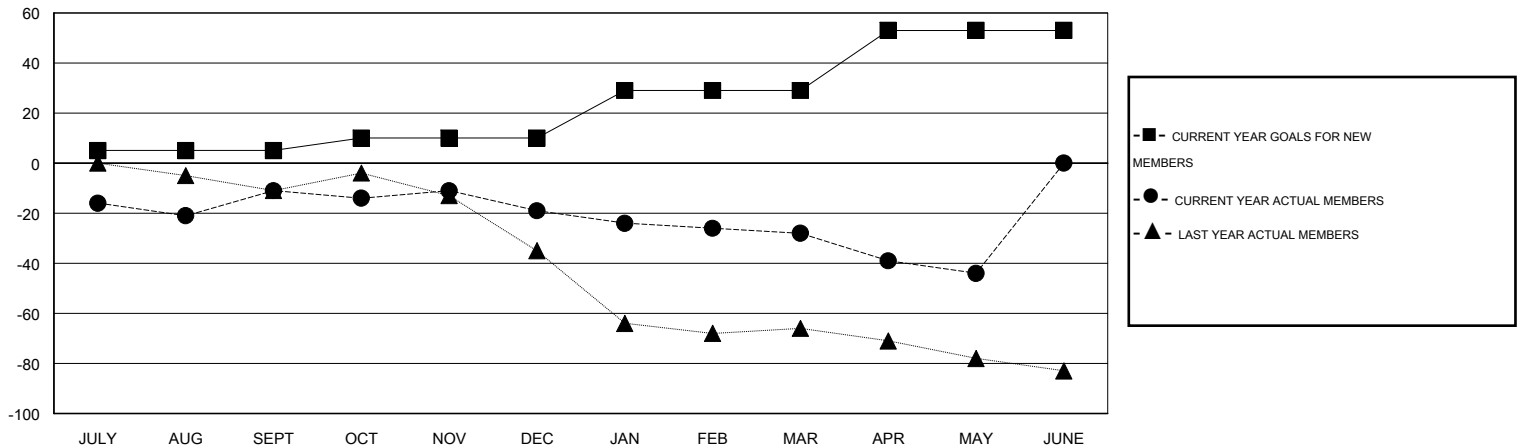
GMT CA 1

Clubs					Members				
RESULTS FOR 2013-2014					RESULTS FOR 2013-2014				
QUARTER	NEW CLUB GOAL	ACTUAL NEW CLUBS	ACTUAL DROPPED CLUBS	ACTUAL NET GAIN/LOSS	QUARTER	NEW MEMBER GOAL	ACTUAL TOTAL MEMBERS ADDED	ACTUAL DROPPED MEMBERS	ACTUAL NET GAIN/LOSS
JULY/AUG/SEPT	0	0	0	0	JULY/AUG/SEPT	5	26	37	-11
OCT/NOV/DEC	0	0	0	0	OCT/NOV/DEC	5	24	32	-8
JAN/FEB/MAR	1	0	0	0	JAN/FEB/MAR	19	17	26	-9
APR/MAY/JUNE	1	0	0	0	APR/MAY/JUNE	24	10	26	-16

GOALS AND ACTUAL NEW CLUBS CUMULATIVE



GOALS AND ACTUAL MEMBERS CUMULATIVE



DROPPED CLUBS: 0	23 CLUBS OF 37 ADDED 1 OR MORE NEW MEMBERS	GENDER DISTRIBUTION MALE 863 (76.30%) FEMALE 268 (23.70%)
DROPPED MEMBERS DECEASED 17 CLUB CANCELLED 0 OTHER 104 TOTAL 121	CLICK HERE FOR HEALTH ASSESSMENT DATA	FAMILY UNIT MEMBERS 157 HEAD OF HOUSEHOLD 78 NON-HEAD OF HOUSEHOLD 79